

**HSF** RoHS 非正式图纸，仅供参考

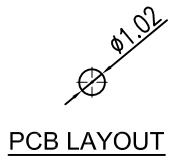
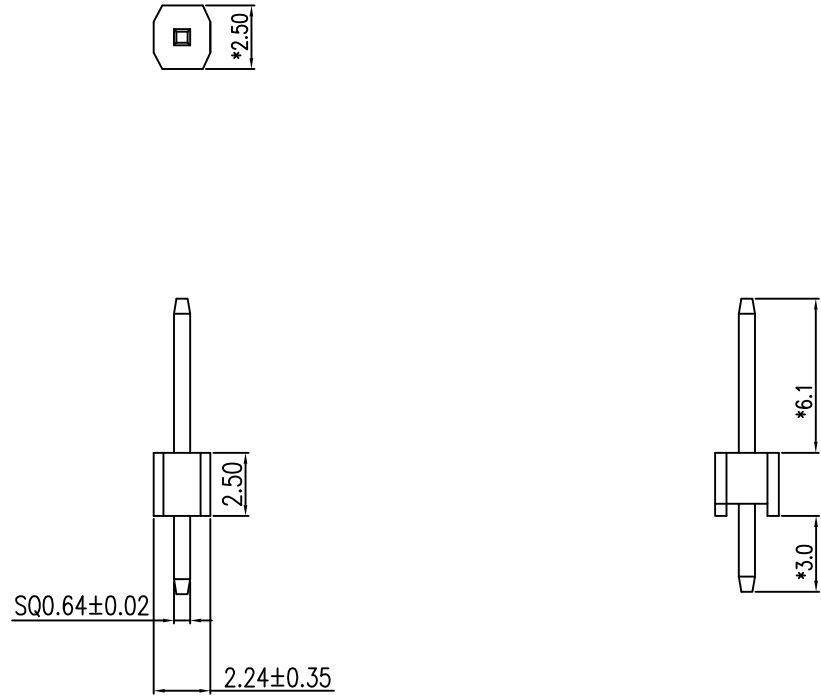
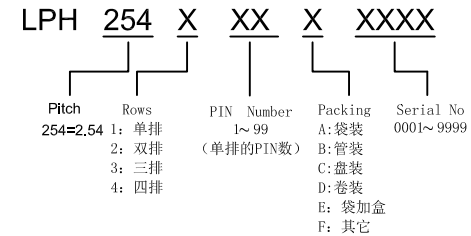
REV	ECN NO	DESCRIPTION	DATE	NAME
A	—	NEW	12/24-'22	LJS

**Specifications**

规范

- Current Rating: 3.0Amps  
额定电流:3.0安培
- rated voltage: 250V AC/DC  
额定电压:250V AC/DC
- Insulation Resistance: 1000 MΩ Min  
绝缘电阻:1000 MΩ最小
- Dielectric withstanding Voltage: 500V AC  
耐电压:500V AC
- Contact Resistance: 20 mΩ Max  
接触电阻:20 mΩ最大
- Operating Temperature: -40°C to +105°C  
工作温度:-40°C ~ +105°C
- Contact Material: Brass  
接触材质:黄铜
- Plating: Au G/F  
电镀:金 G/F
- Insulation Material: LCP,UL94V-0,Black  
绝缘材料:LCP,UL94V-0,黑色
- Marked "\*" symbol are major dimensions  
标有"\*"符号为主要尺寸
- Packing: PE bag; MPQ:2000pcs/PE bag  
包装:PE袋; 最小包装量:2000pcs/袋

**Ordering Information**



STANDARD TOLERANCE (EXCEPT SPECIFIED)	
LINER	ANGLES
.0 ±0.30	0.° ±3°
.00 ±0.20	.0° ±2°
.000 ±0.10	.00° ±1°

LD CONN 东莞连大精密制品有限公司 DongGuan LianDa Precision Products Co., LTD									
TITLE		PH2.54X2.5 1X1P 180° 单排单塑排针			DRAWN BY		LJS		12/24-'22
PART NO.		LPH254101A0025			CHECKED BY				
DRAWING NO.		_____			APPROVED BY				
SCALE	1:1	UNIT	mm		PAGE	1/1	SIZE	A4	