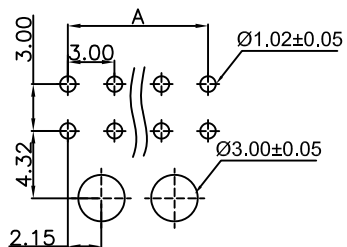
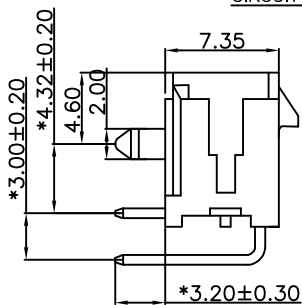
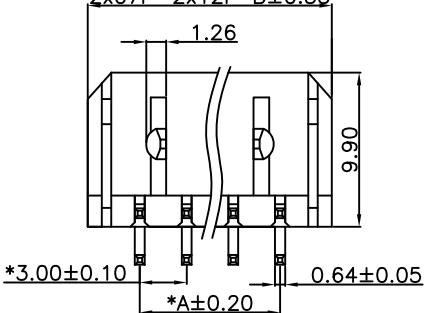
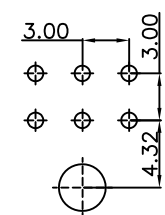


CIRCUIT SIZE LAYOUT

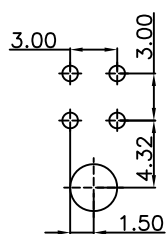
2x01P-2x06P B±0.25
2x07P-2x12P B±0.35



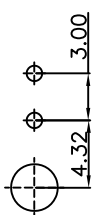
P.C.B LAYOUT
08P-24P



P.C.B LAYOUT
06P



P.C.B LAYOUT
04P



P.C.B LAYOUT
02P

规范
Specifications

1. 额定电流:5.0安培
Current Rating: 5.0Amps
2. 额定电压:250V AC/DC
rated voltage: 250V AC/DC
3. 绝缘电阻:1000 MΩ最小
Insulation Resistance:1000 MΩ Min
4. 耐电压:1500V AC
Dielectric withstanding Voltage: 1500V AC
5. 接触电阻:20 mΩ最大
Contact Resistance: 20 mΩ Max
6. 工作温度:-25°C to+85°C
Operating Temperature: -25°C to+85°C
7. 接触材质:黄铜
Contact Material: Brass
8. 电镀:镀锡加镍底
Plating: Tin Over Ni
9. 绝缘材料:PA66,UL94V-0
Insulation Material:PA66,UL94V-0
10. 标有“*”符号为主要尺寸
Marked “*” symbol are major dimensions
11. 包装: 盘装
Packing: Tray

REV	ECN NO	DESCRIPTION	DATE	NAME
A	—	NEW	03/30-23	KJL

PIN	PART NO	DIM A	DIM B	DIM C	MPQ
2x1P	LA300101C0001	---	6.65	1.00	504
2x2P	LA300102C0002	3.00	9.65	1.00	348
2x3P	LA300103C0003	6.00	12.65	1.00	264
2x4P	LA300104C0001	9.00	15.65	5.60	216
2x5P	LA300105C0001	12.00	18.65	8.60	180
2x6P	LA300106C0001	15.00	21.65	11.60	156
2x7P	LA300107C0001	18.00	24.65	14.60	132
2x8P	LA300108C0001	21.00	27.65	17.60	120
2x9P	LA300109C0010	24.00	30.65	20.60	108
2x10P	LA300110C0001	27.00	33.65	23.60	96
2x11P	LA300111C0001	30.00	36.65	26.60	84
2x12P	LA300112C0001	33.00	39.65	29.60	84

Ordering Information

LA3001 XX X XXXX

NO.of Pins Per Row: 01-99P
Packing: A:袋装, B:管装, C:盘装, D:卷装, E:袋加盒, F:其它
Serial NO. 0001-9999

LDCONN 东莞连大精密制品有限公司
DongGuan LianDa Precision Products Co., LTD

STANDARD TOLERANCE (EXCEPT SPECIFIED)	
LINER	ANGLES
.0 ±0.30	0.° ±3°
.00 ±0.20	.0° ±2°
.000 ±0.10	.00° ±1°

TITLE	WAFFER-X PH3.0 2XNP 90° 带扣,带柱 黑色(W3045R)	DRAWN BY	KJL	03/30-23
PART NO.	SEE TABLE	CHECKED BY		
DRAWING NO.	—	APPROVED BY		
SCALE	1:1	UNIT	mm	PAGE 1/1
				SIZE A4