

# HSF RoHS

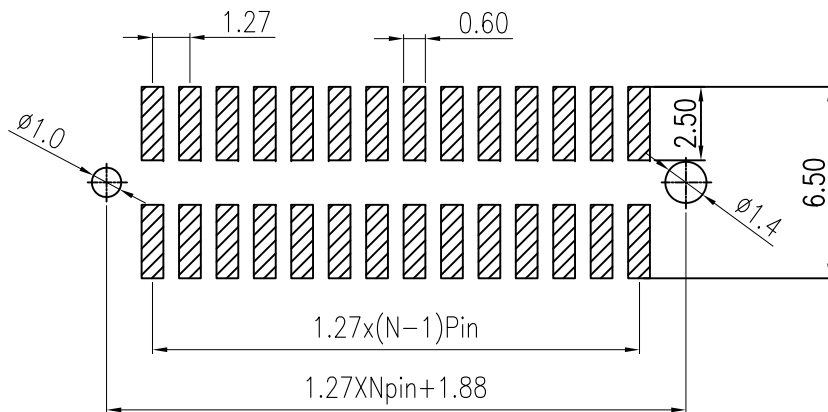
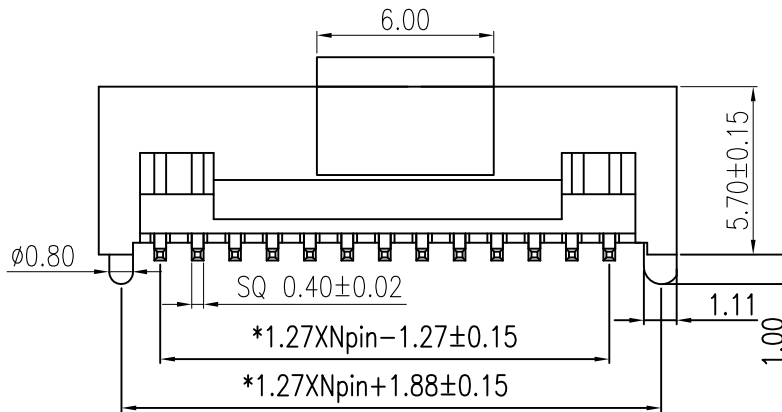
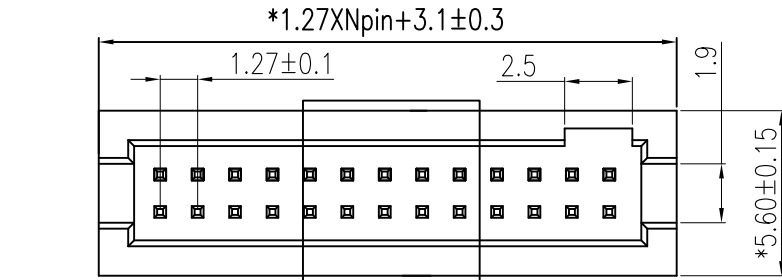
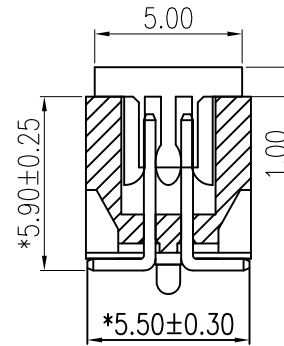
REV	ECN NO	DESCRIPTION	DATE	NAME
A	—	NEW	06/20-'20	SXS

## Specifications

- 1.Current Rating:1Amps
- 2.Insulation Resistance:1000 MΩ min.
- 3.Dielectric withstanding Voltage: AC 500V
- 4.Contact Resistance:30 mΩ max.
- 5.Operating Temperature:-40℃ to+105℃
- 6.Contact Material: Brass
- 7.Insulation Material: NY6T UL94V-0;
- 8.PLATING:As follows.
- 9.Salt Spray: 24h.
- 10.Retention Force: Refer 《Insertion force、withdraw force and retention force standard specification 》
- 11.Marked "\*" symbol are major dimensions.

## Ordering Information

L230	XX	-	XX	0	X	X	XX	X
塑胶高度 57=5.7	PIN数每排 3-50P	产品类型 0=180° 1=90° 2=SMT	材质类型 1=PBT 3=NY6T 4=LCP 5=NY66 7=NY46 8=NY9T	电镀规格 0=Thin Gold 1=Au1u" 2=Au1.5u" 3=Au2u" 4=Au3u" 5=Au5u" 6=Au10u" 7=半金锡 8=镀亮锡 9=镀雾锡	流水号 01-69不带柱 70-99带内柱	包装类型 A=袋装 B=管装 C=盘装 D=卷装		

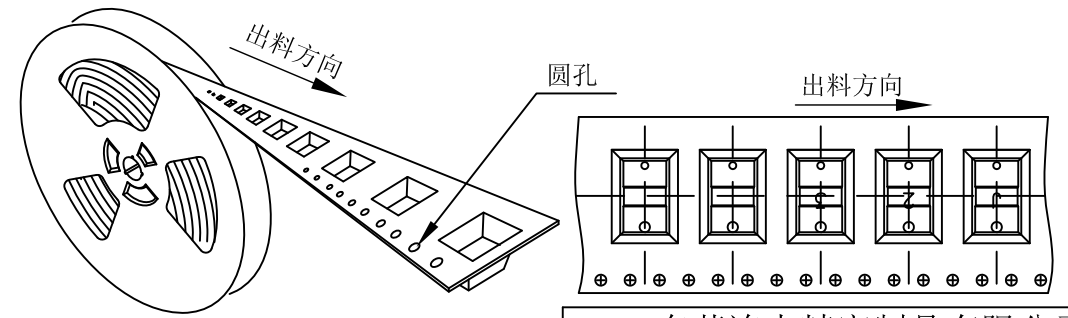
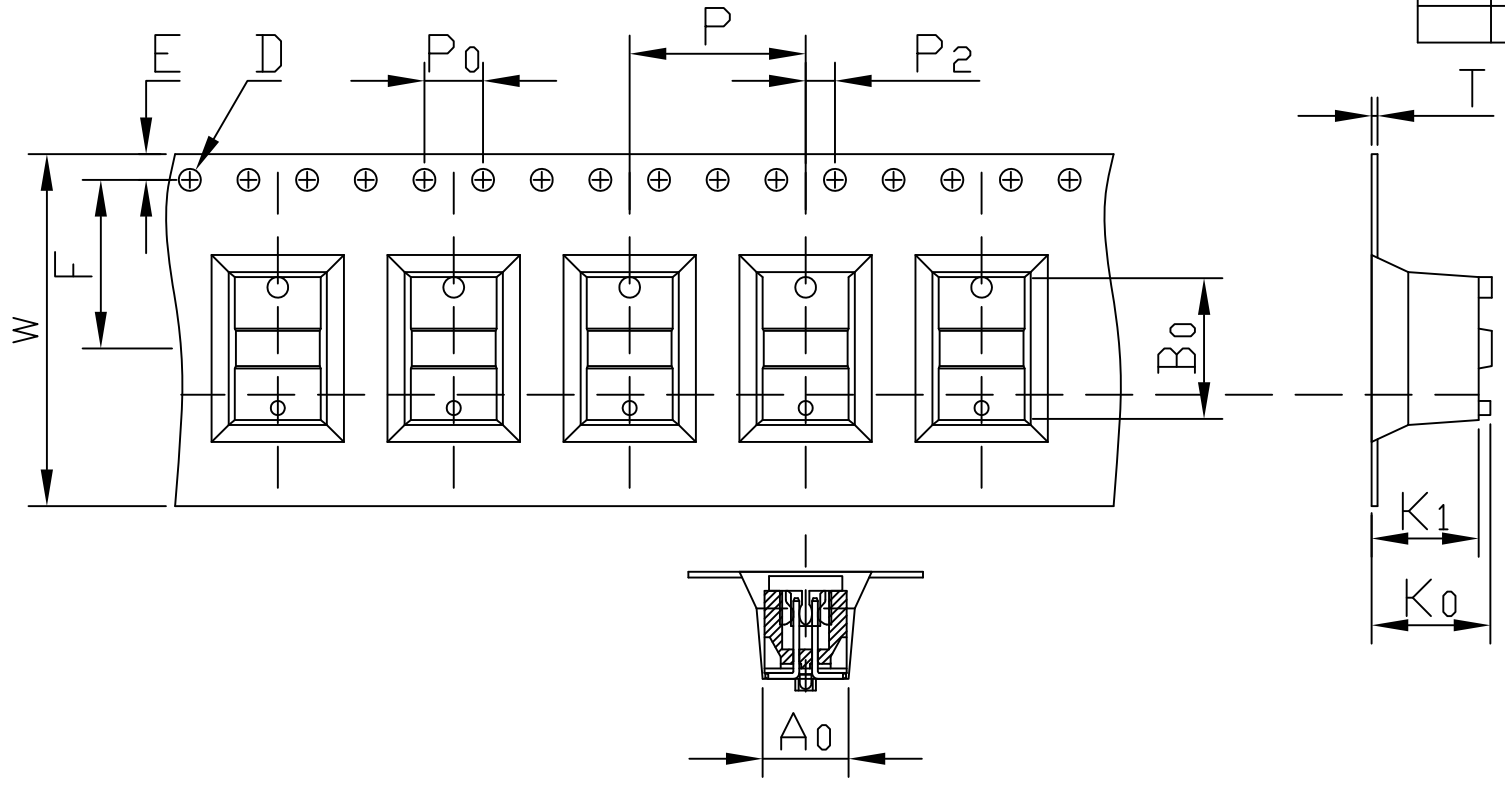


Recommended P.C.B Layout(Top Side)  
(PCB BOARD TOLERANCE±0.05)

TOLERANCE UNLESS OTHERWISE SPECIFIED	
LINER	ANGLES
.0 ±0.30	0.° ±3°
.00 ±0.20	.0° ±2°
.000 ±0.10	.00° ±1°

LDCONN 东莞连大精密制品有限公司 DongGuan LianDa Precision Products Co., LTD					
TITLE	PH1.27X5.7 2X22P SMT筒牛带柱带吸取帽	DRAWN BY	SXS	06/20-'20	
PART NO.	L23057-2223070D	CHECKED BY			
DRAWING NO.		APPROVED BY			
SCALE	1:1	UNIT	mm	PAGE	1/1
				SIZE	A4

版本	变更内容	日期	变更人
A	新版发行	2018. 8. 04	ChengLin
B	新增定位柱防呆、材质透明	2019. 10. 17	Xue-XL



技术要求:

- 圆孔十个孔距离累计允许公差为±0.20mm.
- 带长250mm内容许弯曲度1mm.
- A<sub>0</sub>/B<sub>0</sub>尺寸由槽底0.30mm高处定义之.
- K<sub>0</sub>尺寸由槽底内表面处至成型上表面处定义之.
- 所有尺寸定义依循EIA-481-C系准则定义之.
- 材料: 透明PET材质.
- 材料厚度: 0.40±0.05MM.
- 13"单卷可装长度: 8.448 Meter (88模).
- 13"单卷可装颗数: 650+54psc (前后共空54格).
- 未注明拔模斜度为5°.
- 重点检验尺寸代号: W、P<sub>0</sub>、P、P<sub>2</sub>、E、F、T、A<sub>0</sub>、B<sub>0</sub>、K<sub>0</sub>.

W	24.00	<sup>+0.30</sup> / <sub>-0.30</sub>	P	12.00	<sup>+0.10</sup> / <sub>-0.10</sub>	A <sub>0</sub>	5.70	<sup>+0.10</sup> / <sub>-0.10</sub>	B <sub>0</sub>	9.60	<sup>+0.10</sup> / <sub>-0.10</sub>
S		<sup>+0.10</sup> / <sub>-0.10</sub>	P <sub>0</sub>	4.00	<sup>+0.10</sup> / <sub>-0.10</sub>	A <sub>1</sub>		<sup>+0.10</sup> / <sub>-0.10</sub>	B <sub>1</sub>		<sup>+0.10</sup> / <sub>-0.10</sub>
E	1.75	<sup>+0.10</sup> / <sub>-0.10</sub>	P <sub>2</sub>	2.00	<sup>+0.10</sup> / <sub>-0.10</sub>	A <sub>2</sub>		<sup>+0.10</sup> / <sub>-0.10</sub>	B <sub>2</sub>		<sup>+0.10</sup> / <sub>-0.10</sub>
F	11.50	<sup>+0.10</sup> / <sub>-0.10</sub>	D <sub>0</sub>	∅1.50	<sup>+0.10</sup> / <sub>-0.00</sub>	K <sub>0</sub>	8.20	<sup>+0.10</sup> / <sub>-0.10</sub>			
T	0.40	<sup>+0.05</sup> / <sub>-0.05</sub>	D <sub>1</sub>		<sup>+0.10</sup> / <sub>-0.10</sub>	K <sub>1</sub>	7.30	<sup>+0.10</sup> / <sub>-0.10</sub>			

**LDCONN** 东莞连大精密制品有限公司  
DongGuan LianDa Precision Products Co., LTD

料号: PH1.27X5.7 2XNP SMT 筒牛带柱带幅

日期: 2019.10.17 客户: \_\_\_\_\_

制图: Xue-XL 模号: \_\_\_\_\_

核准: \_\_\_\_\_ 客户版本: B

比例: 1:1 单位: mm 版本: B