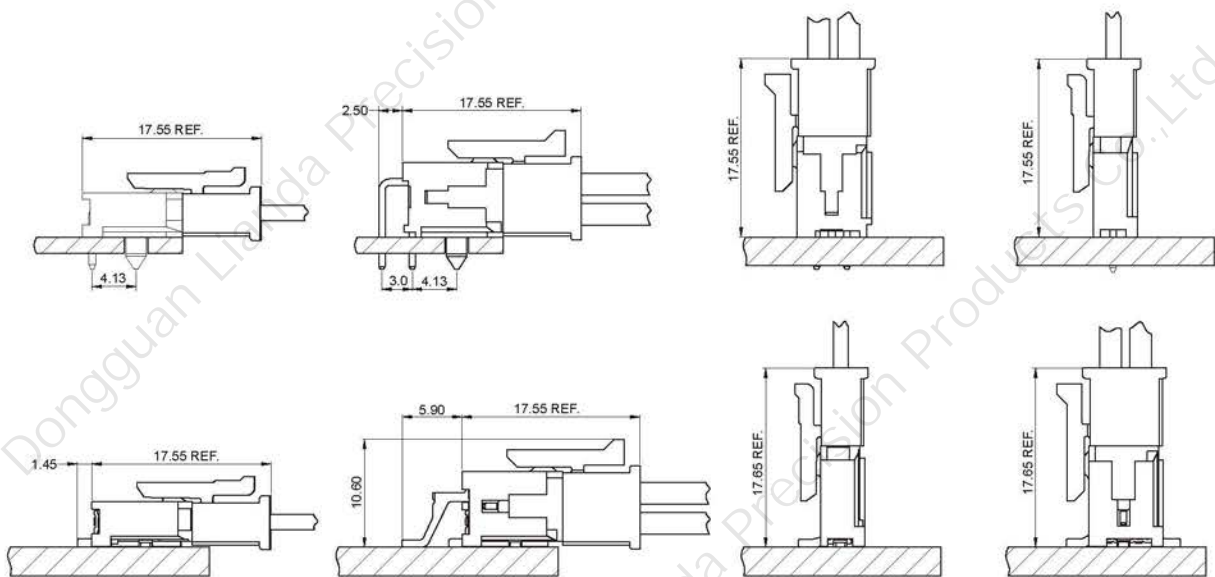


Specifications

- Contact resistance: $\leq 10\text{m}\Omega$
- Insulation resistance: $\geq 1000\text{M}\Omega$
- Rated voltage: 250V AC DC
- Rated current: 5.0A AC DC
- Withstand voltage: 1000V AC/minute
- Temperature range: $-40^{\circ}\text{C} \sim +105^{\circ}\text{C}$

Assembly Layout



WIRE TO BOARD

BOARD TO BOARD

WIRE TO WIRE

FPC SERIES

THR SERIES

LIGHTING SERIES

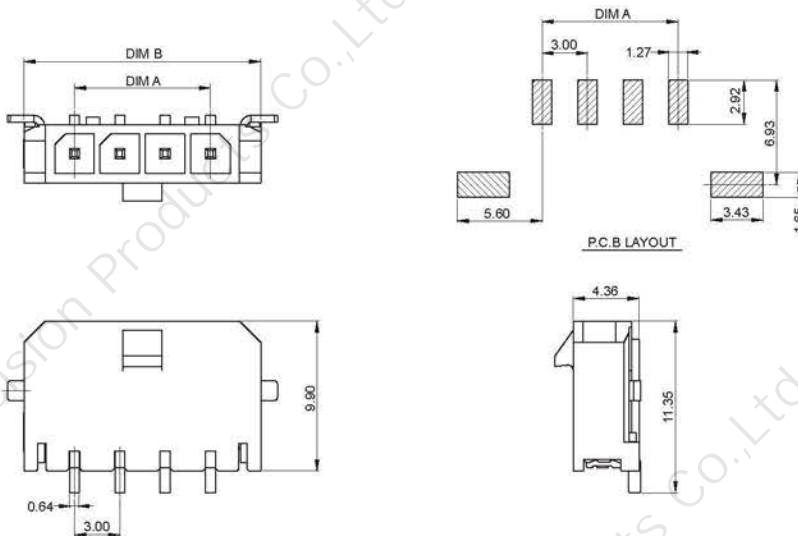
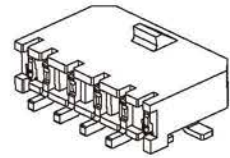
OTHER SERIES

A3001 SERIES

3.00mm pitch wire to board connector

A3001AWR (3.00mm pitch 90°Wafer SMT TYPE)

- Reference Information:
- Material: Pin: Brass/Tin-plated
- Solder Tabs: Brass/Tin-plated
- Wafer: LCP,UL94V-0
- Mates with A3001 series Housing

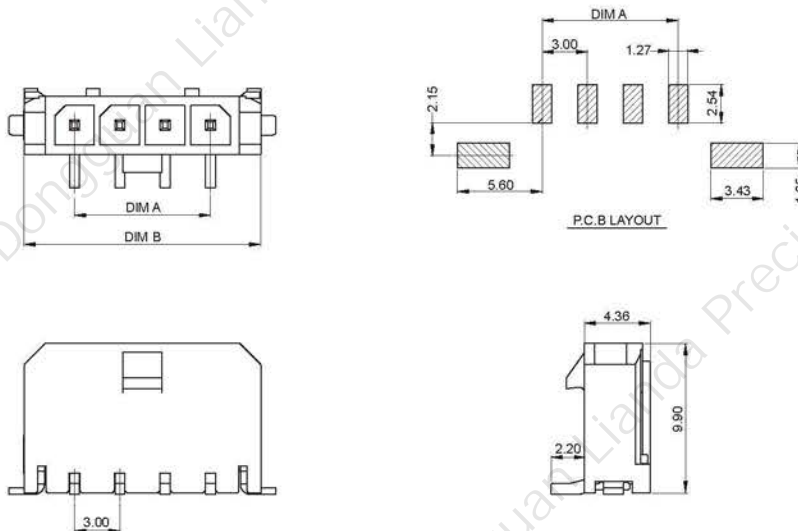
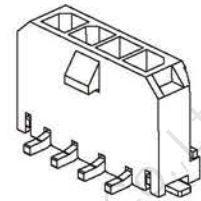


Ordering Information & Dimensions:

Circuit	Dimensions(mm)	
	A	B
02	3.00	9.65
03	6.00	12.65
04	9.00	15.65
05	12.00	18.65
06	15.00	21.65
07	18.00	24.65
08	21.00	27.65
09	24.00	30.65
10	27.00	33.65
11	30.00	36.65
12	33.00	39.65

A3001AWV (3.00mm pitch 180°Wafer SMT TYPE)

- Reference Information:
- Material: Pin: Brass/Tin-plated
- Solder Tabs: Brass/Tin-plated
- Wafer: LCP,UL94V-0
- Mates with A3001 series Housing

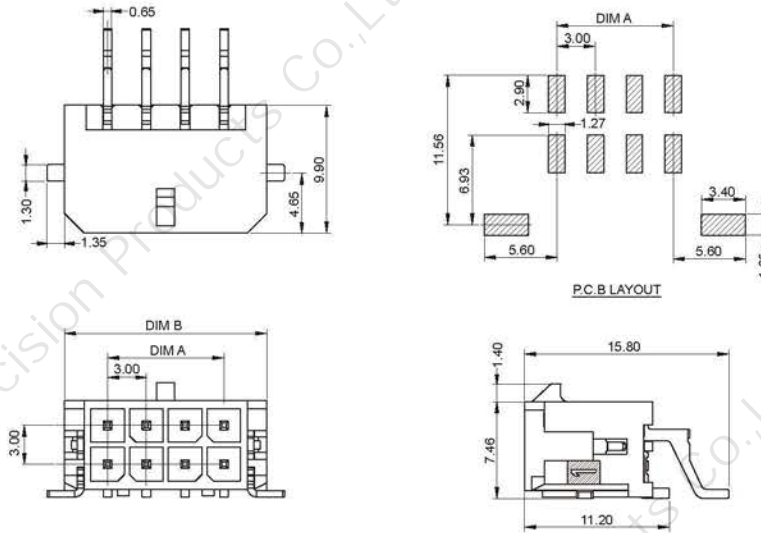
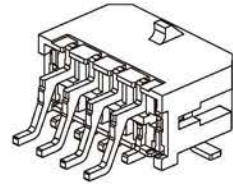


Ordering Information & Dimensions:

Circuit	Dimensions(mm)	
	A	B
02	3.00	9.65
03	6.00	12.65
04	9.00	15.65
05	12.00	18.65
06	15.00	21.65
07	18.00	24.65
08	21.00	27.65
09	24.00	30.65
10	27.00	33.65
11	30.00	36.65
12	33.00	39.65

A3001AWR (3.00mm pitch 90°Wafer SMT TYPE, Double Row)

- Reference Information:
- Material: Pin: Brass/Tin-plated
- Solder Tabs: Brass/Tin-plated
- Wafer: LCP,UL94V-0
- Mates with A3001 series Housing

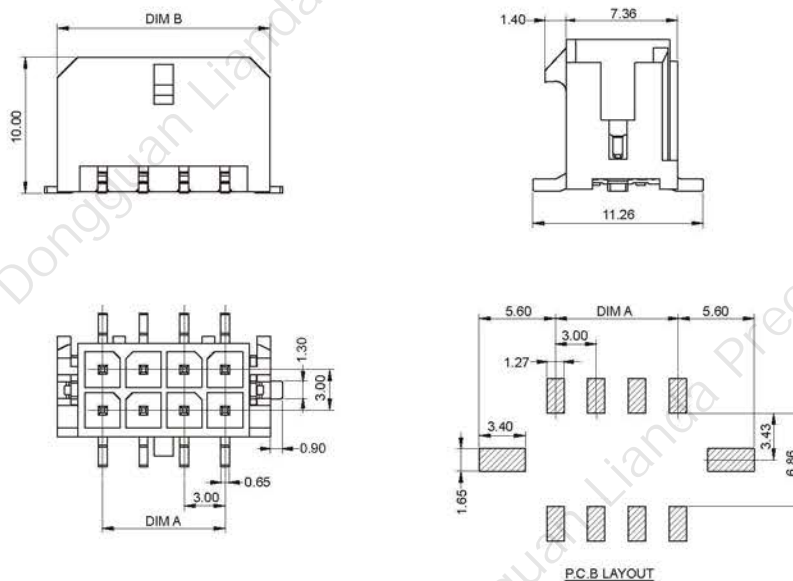
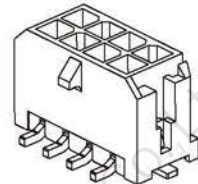


Ordering Information & Dimensions:

Circuit	Dimensions(mm)	
	A	B
2*2	3.00	9.65
2*3	6.00	12.65
2*4	9.00	15.65
2*5	12.00	18.65
2*6	15.00	21.65
2*7	18.00	24.65
2*8	21.00	27.65
2*9	24.00	30.65
2*10	27.00	33.65
2*11	30.00	36.65
2*12	33.00	39.65

A3001AWV (3.00mm pitch 180°Wafer SMT TYPE, Double Row)

- Reference Information:
- Material: Pin: Brass/Tin-plated or Gold-flash
- Solder Tabs: Brass/Tin-plated
- Wafer: LCP,UL94V-0
- Mates with A3001 series Housing



Ordering Information & Dimensions:

Circuit	Dimensions(mm)	
	A	B
2*2	3.00	9.65
2*3	6.00	12.65
2*4	9.00	15.65
2*5	12.00	18.65
2*6	15.00	21.65
2*7	18.00	24.65
2*8	21.00	27.65
2*9	24.00	30.65
2*10	27.00	33.65
2*11	30.00	36.65
2*12	33.00	39.65

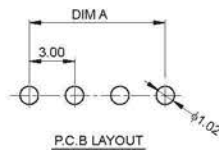
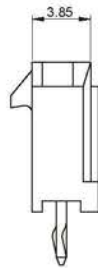
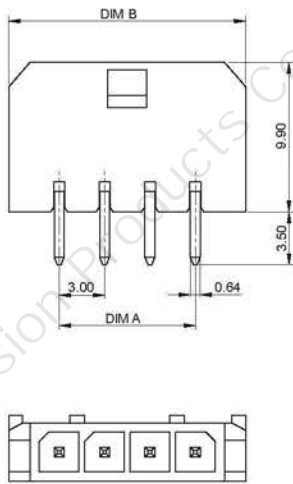
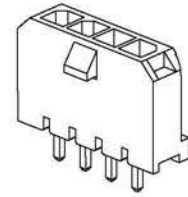
A3001 SERIES

3.00mm pitch wire to board connector

A3001A ((3.00mm pitch 180°Wafer DIP TYPE))

■ Reference Information:

Material: Pin: Brass/Tin-plated
 Wafer: PA66,UL 94V-0(2)
 Mates with A3001 series Housing



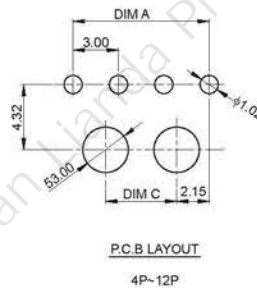
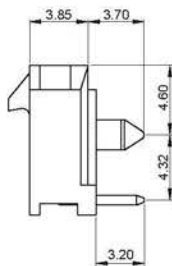
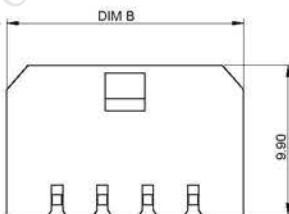
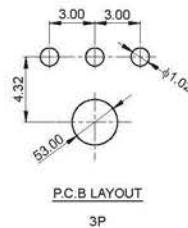
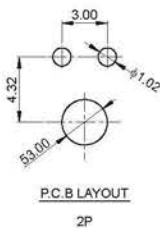
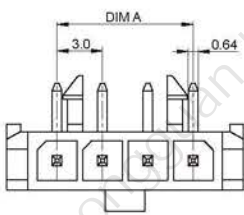
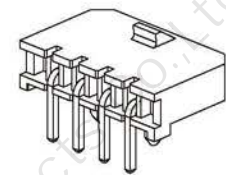
Ordering Information & Dimensions:

Circuit	Dimensions(mm)	
	A	B
02	3.00	9.70
03	6.00	12.70
04	9.00	15.70
05	12.00	18.70
06	15.00	21.70
07	18.00	24.70
08	21.00	27.70
09	24.00	30.70
10	27.00	33.70
11	30.00	36.70
12	33.00	39.70

A3001AW (3.00mm pitch 90°Wafer DIP TYPE)

■ Reference Information:

Material: Pin: Brass/Tin-plated
 Wafer: PA66,UL 94V-0(2)
 Mates with A3001 series Housing



Ordering Information & Dimensions:

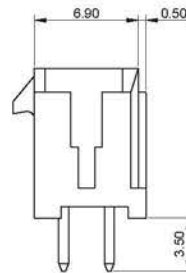
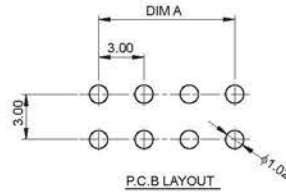
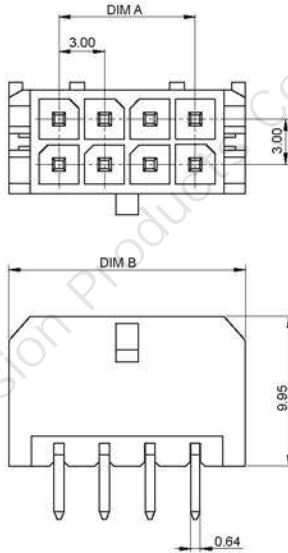
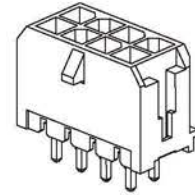
Circuit	Dimensions(mm)		
	A	B	C
02	3.00	9.70	
03	6.00	12.70	
04	9.00	15.70	4.70
05	12.00	18.70	7.70
06	15.00	21.70	10.70
07	18.00	24.70	13.70
08	21.00	27.70	16.70
09	24.00	30.70	19.70
10	27.00	33.70	22.70
11	30.00	36.70	25.70
12	33.00	39.70	28.70

A3001 SERIES

3.00mm pitch wire to board connector

A3001A (3.00mm pitch 180°Wafer DIP TYPE, Double Row)

- Reference Information:
- Material: Pin: Brass/Tin-plated
- Wafer: PA66, UL 94V-0(2)
- Mates with A3001 series Housing

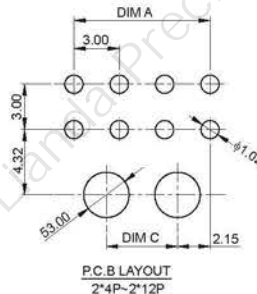
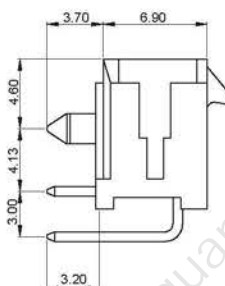
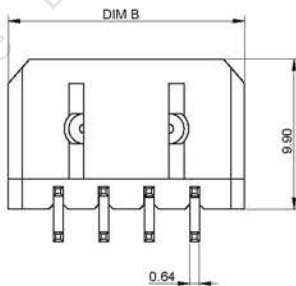
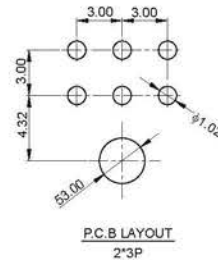
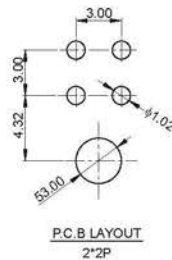
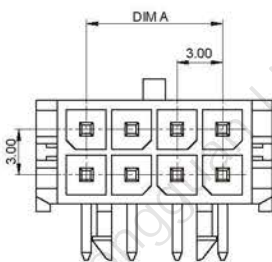
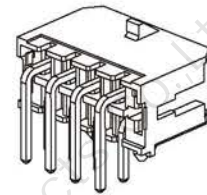


Ordering Information & Dimensions:

Circuit	Dimensions(mm)	
	A	B
2*2	3.00	9.60
2*3	6.00	12.60
2*4	9.00	15.60
2*5	12.00	18.60
2*6	15.00	21.60
2*7	18.00	24.60
2*8	21.00	27.60
2*9	24.00	30.60
2*10	27.00	33.60
2*11	30.00	36.60
2*12	33.00	39.60

A3001AW (3.00mm pitch 90°Wafer DIP TYPE, Double Row)

- Reference Information:
- Material: Pin: Brass/Tin-plated
- Wafer: PA66, UL 94V-0(2)
- Mates with A3001 series Housing



Ordering Information & Dimensions:

Circuit	Dimensions(mm)		
	A	B	C
2*2	3.00	9.60	
2*3	6.00	12.60	
2*4	9.00	15.60	4.70
2*5	12.00	18.60	7.70
2*6	15.00	21.60	10.70
2*7	18.00	24.60	13.70
2*8	21.00	27.60	16.70
2*9	24.00	30.60	19.70
2*10	27.00	33.60	22.70
2*11	30.00	36.60	25.70
2*12	33.00	39.60	28.70

WIRE TO BOARD

BOARD TO BOARD

WIRE TO WIRE

FPC SERIES

THR SERIES

LIGHTING SERIES

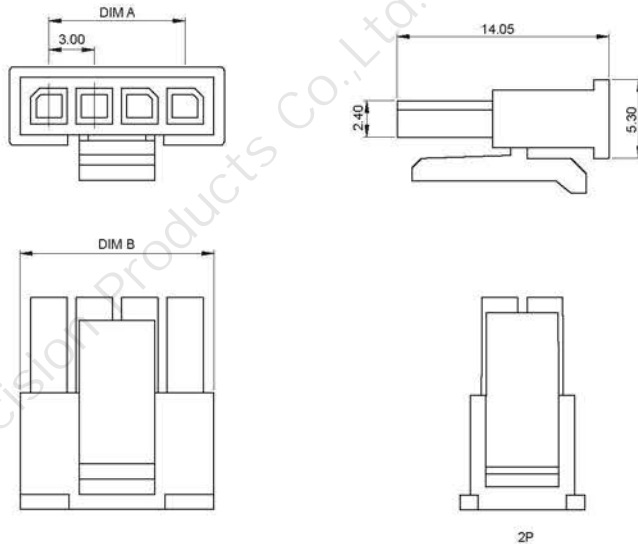
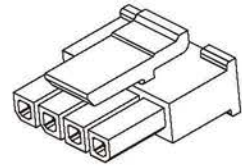
OTHER SERIES

A3001 SERIES

3.00mm pitch wire to board connector

A3001Y (3.00mm pitch Housing)

- Reference Information:
Material: PA66,UL 94V-0(2)
Suitable A3001 series terminal
Mates with A3001 series Wafer

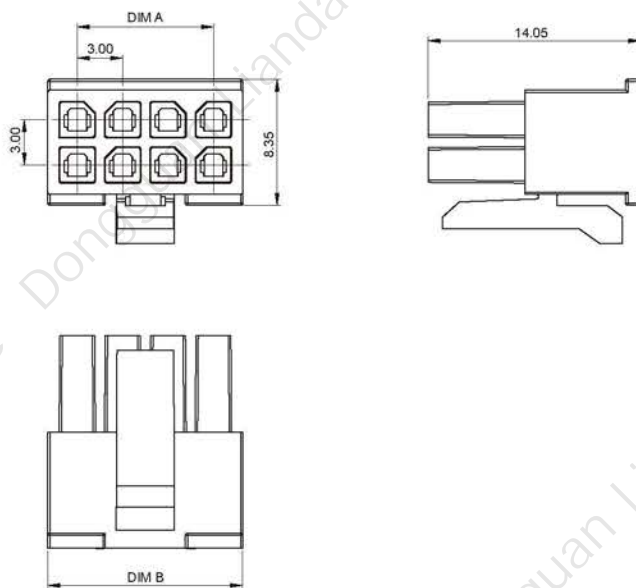
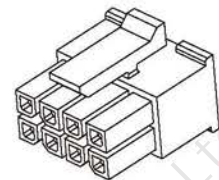


Ordering Information & Dimensions:

Circuit	Dimensions(mm)	
	A	B
02	3.00	6.80
03	6.00	9.80
05	12.00	15.80
06	15.00	18.80
07	18.00	21.80
08	21.00	24.80
09	24.00	27.80
10	27.00	30.80
11	30.00	33.80
12	33.00	36.80

A3001Y (3.00mm pitch Housing Double Row)

- Reference Information:
Material: PA66,UL 94V-0(2)
Suitable A3001 series terminal
Mates with A3001 series Wafer



Ordering Information & Dimensions:

Circuit	Dimensions(mm)	
	A	B
2*2	3.00	6.90
2*3	6.00	9.90
2*4	9.00	12.90
2*5	12.00	15.90
2*6	15.00	18.90
2*7	18.00	21.90
2*8	21.00	24.90
2*9	24.00	27.90
2*10	27.00	30.90
2*11	30.00	33.90
2*12	33.00	36.90

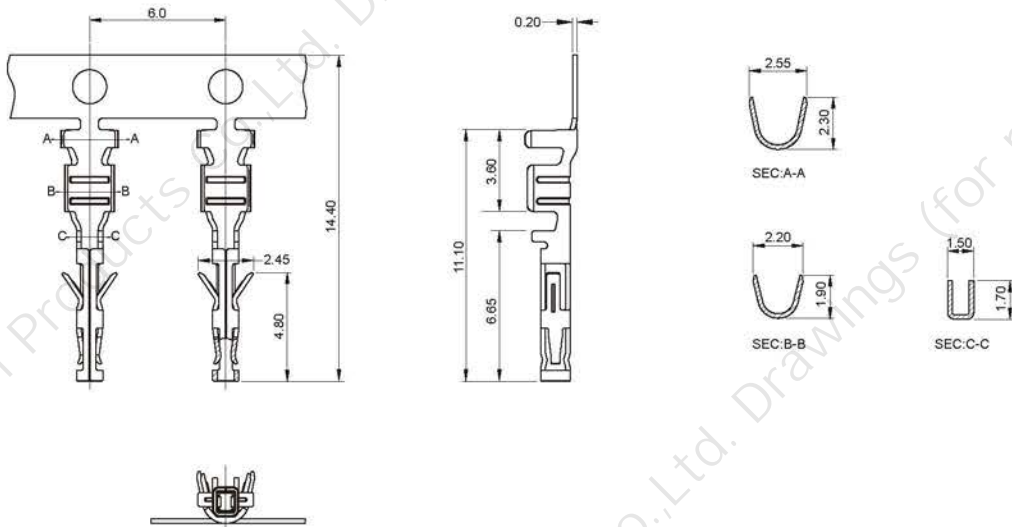
A3001 SERIES

3.00mm pitch wire to board connector

A3001T (3.00mm pitch Terminal)

■ Reference Information:

Used in A3001 series Housing



Ordering Information & Dimensions:

Part No	Wire Range	Insulation O.D.	Material	Finish	Qty/Reel
A3001T	AWG #22 ~ #28	1.00~1.90mm(max)	Phosphor bronze	Tin-plated	10000PCS

WIRE TO BOARD

BOARD TO BOARD

WIRE TO WIRE

FPC SERIES

THR SERIES

LIGHTING SERIES

OTHER SERIES