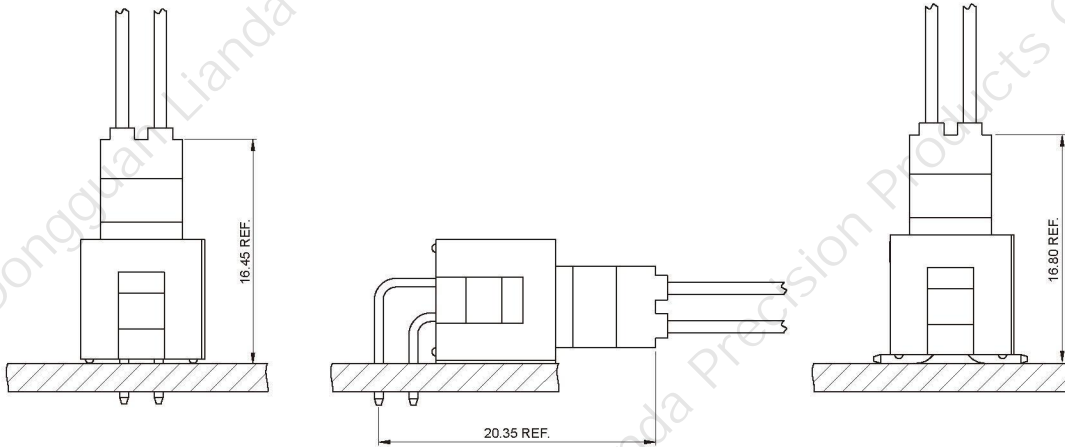
**■ Specifications**

- Contact resistance: $\leq 20\text{m}\Omega$
- Insulation resistance: $\geq 1000\text{M}\Omega$
- Rated voltage: 250V AC DC
- Rated current: 3.0A AC DC
- Withstand voltage: 1000V AC/minute
- Temperature range: $-25^{\circ}\text{C} \sim +85^{\circ}\text{C}$

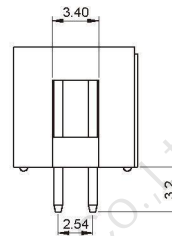
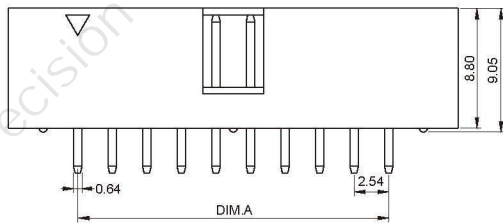
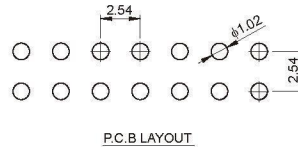
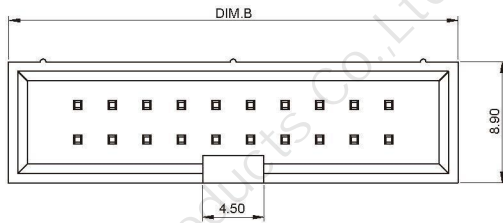
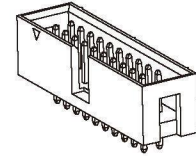
■ Assembly Layout

A25410 SERIES

2.54mm pitch wire to board connector

A25410A (2.54mm pitch 180°Wafer DIP TYPE)

- Reference Information:
- Material: Pin: Brass/Tin-plated
- Wafer: PBT,UL94V-0(2)
- Mates with A25410 series Housing

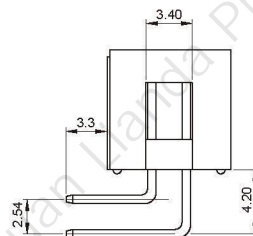
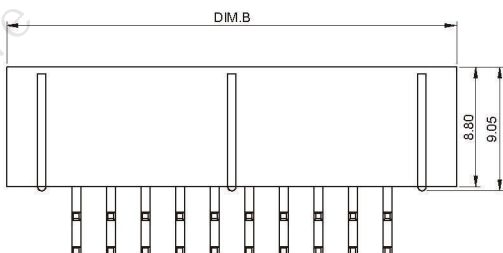
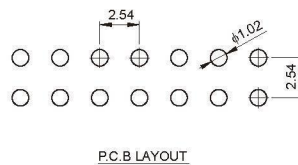
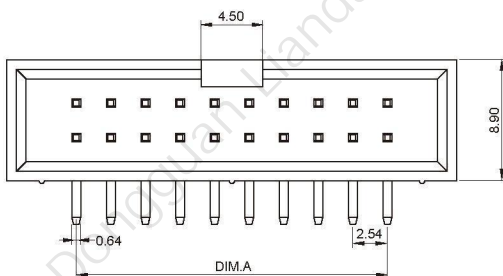
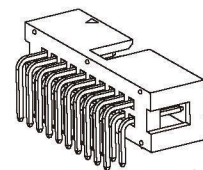


Ordering Information & Dimensions:

Circuit	Dimensions(mm)	
	A	B
2*3	5.08	15.27
2*4	7.62	17.81
2*5	10.16	20.35
2*6	12.70	22.89
2*7	15.24	25.43
2*8	17.78	27.97
2*9	20.32	30.51
2*10	22.86	33.05
2*12	27.94	38.13
2*13	30.48	40.67
2*15	35.56	45.75
2*17	40.64	50.83
2*20	48.26	58.45
2*25	60.96	71.15
2*30	73.66	83.95
2*32	78.74	88.93

A25410AW (2.54mm pitch 90°Wafer DIP TYPE)

- Reference Information:
- Material: Pin: Brass/Tin-plated
- Wafer: PBT,UL94V-0(2)
- Mates with A25410 series Housing



Ordering Information & Dimensions:

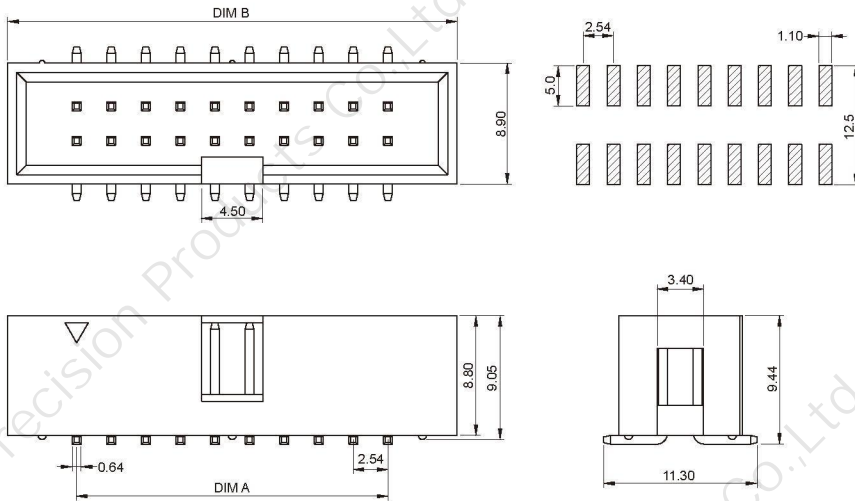
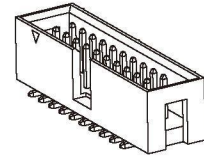
Circuit	Dimensions(mm)	
	A	B
2*3	5.08	15.27
2*4	7.62	17.81
2*5	10.16	20.35
2*6	12.70	22.89
2*7	15.24	25.43
2*8	17.78	27.97
2*9	20.32	30.51
2*10	22.86	33.05
2*12	27.94	38.13
2*13	30.48	40.67
2*15	35.56	45.75
2*17	40.64	50.83
2*20	48.26	58.45
2*25	60.96	71.15
2*30	73.66	83.95
2*32	78.74	88.93

A25410 SERIES

2.54mm pitch wire to board connector

A25410AWV (2.54mm pitch 180°Wafer DIP TYPE)

- Reference Information:
- Material: Pin: Brass/Tin-plated
- Wafer: PBT,UL94V-0(2)
- Mates with A25410 series Housing

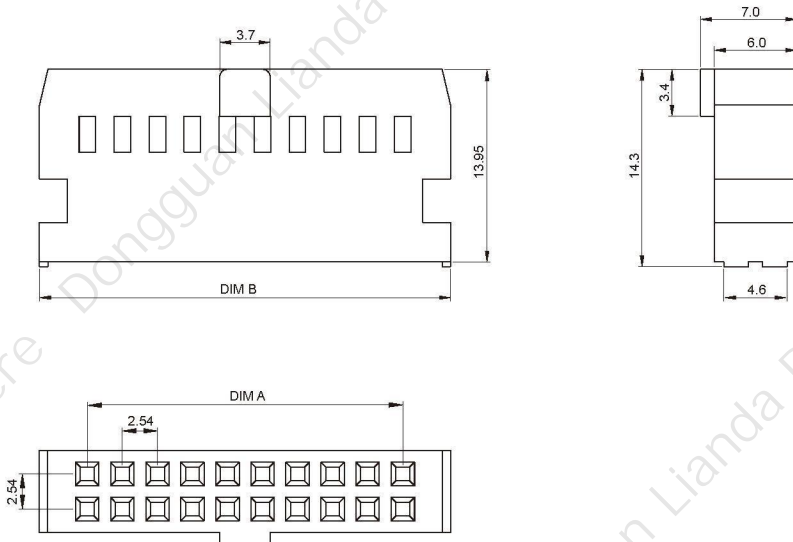
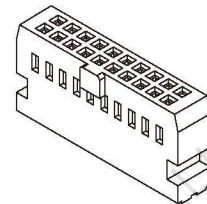


Ordering Information & Dimensions:

Circuit	Dimensions(mm)	
	A	B
2*3	5.08	15.27
2*4	7.62	17.81
2*5	10.16	20.35
2*6	12.70	22.89
2*7	15.24	25.43
2*8	17.78	27.97
2*9	20.32	30.51
2*10	22.86	33.05
2*12	27.94	38.13
2*13	30.48	40.67
2*15	35.56	45.75
2*17	40.64	50.83
2*20	48.26	58.45
2*25	60.96	71.15
2*30	73.66	83.95
2*32	78.74	88.93

A25410Y (2.54mm pitch Housing)

- Reference Information:
- Material: PA66,UL94V-0(2)
- Suitable A25410 series terminal
- Mates with A25410 series Wafer



Ordering Information & Dimensions:

Circuit	Dimensions(mm)	
	A	B
2*5	10.16	17.10
2*7	15.24	22.18
2*8	17.78	24.72
2*10	22.86	29.80
2*12	27.94	34.88
2*13	30.48	37.42
2*15	35.56	42.50
2*17	40.64	47.58
2*20	48.26	55.20
2*25	60.96	67.90
2*30	73.66	80.60
2*32	78.74	85.68

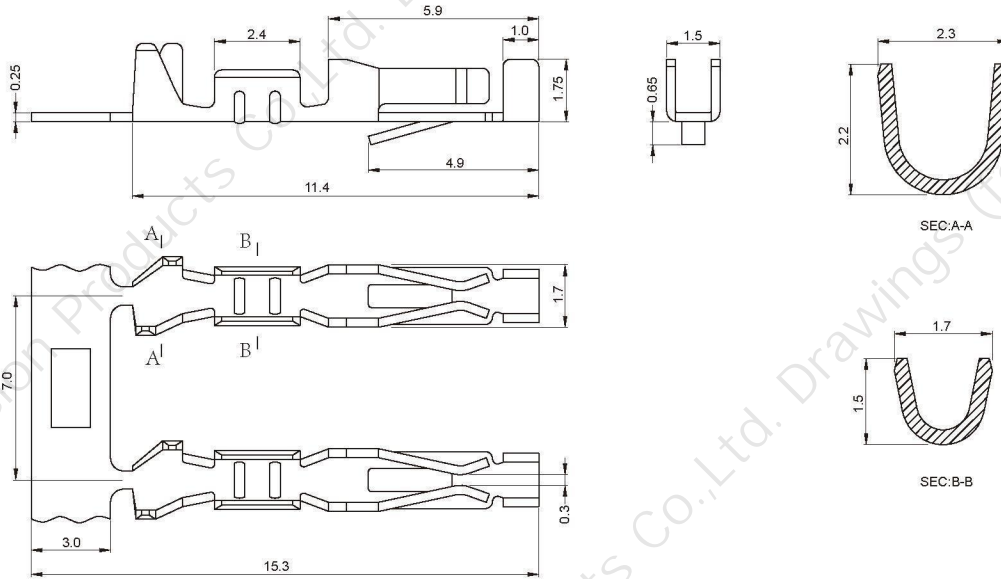
A25410 SERIES

2.54mm pitch wire to board connector

A25410T (2.54mm pitch Terminal)

■ Reference Information:

Used in A25410 series Housing



Ordering Information & Dimensions:

Part No	Wire Range	Insulation O.D.	Material	Finish	Qty/Reel
A25410T	AWG #22~#28	1.60mm(max)	Phosphor bronze	Tin-plated	/