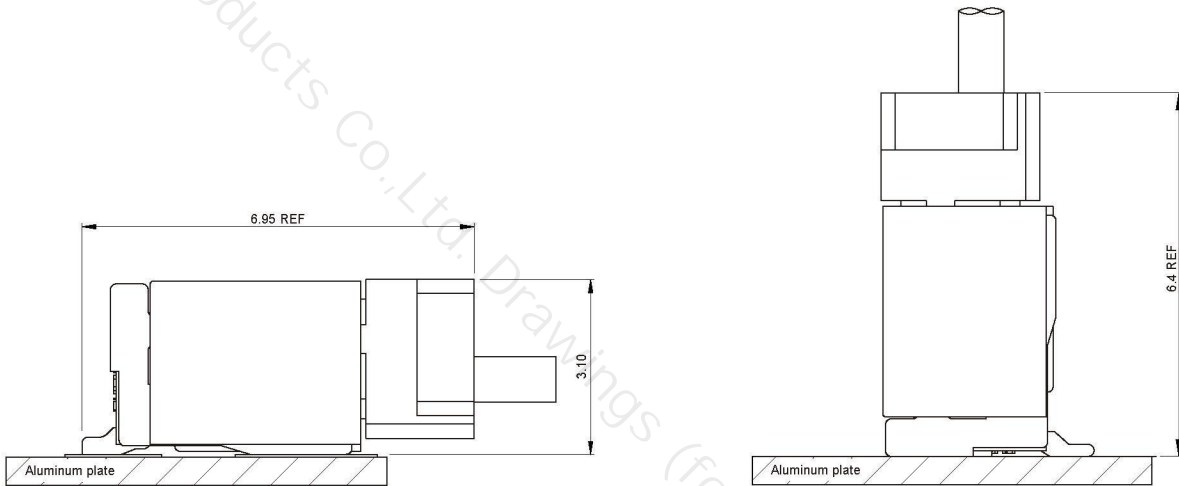


Specifications

- Contact resistance: $\leq 20m\Omega$
- Insulation resistance: $\geq 100M\Omega$
- Rated voltage: 50V AC DC
- Rated current: 1.0A AC DC
- Withstand voltage: 500V AC/minute
- Temperature range: $-25^{\circ}C \sim +85^{\circ}C$

Assembly Layout



WIRE TO BOARD
BOARD TO BOARD
WIRE TO WIRE
FPC SERIES
THR SERIES
LIGHTING SERIES
OTHER SERIES

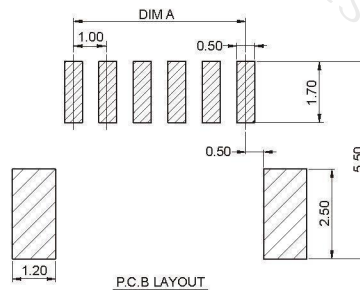
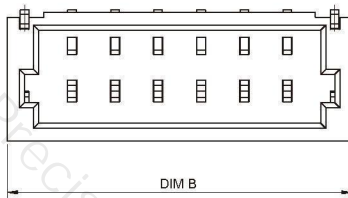
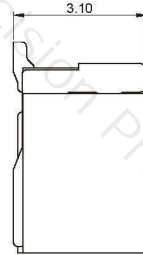
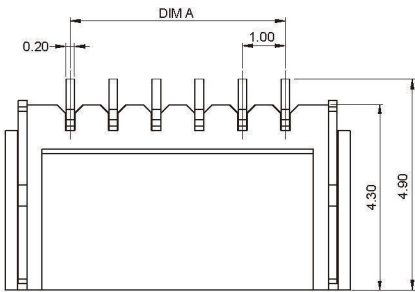
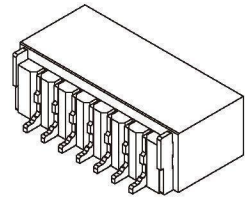
A1001 SERIES

1.00mm pitch wire to board connector

A1001AWR (1.00mm pitch 90°Wafer SMT TYPE)

■ Reference Information:

Material: Pin: Phosphor Bronze/Tin-plated or Gold-flash
 Solder Tabs: Phosphor Bronze/Tin-plated
 Wafer: LCP,UL94V-0
 Mates with A1001 series Housing



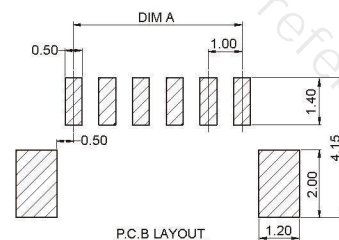
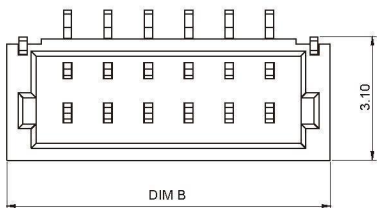
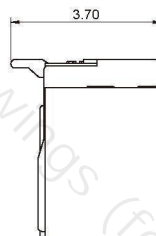
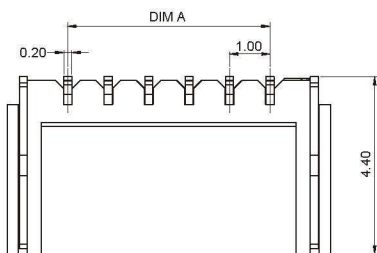
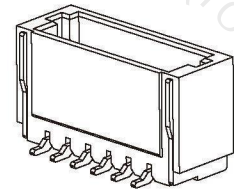
Ordering Information & Dimensions:

Circuit	Dimensions(mm)	
	A	B
02	1.00	4.00
03	2.00	5.00
04	3.00	6.00
05	4.00	7.00
06	5.00	8.00
07	6.00	9.00
08	7.00	10.00
09	8.00	11.00
10	9.00	12.00
11	10.00	13.00
12	11.00	14.00
13	12.00	15.00
14	13.00	16.00
15	14.00	17.00
16	15.00	18.00
20	19.00	22.00

A1001AWV (1.00mm pitch 180°Wafer SMT TYPE)

■ Reference Information:

Material: Pin: Phosphor Bronze/Tin-plated or Gold-flash
 Solder Tabs: Phosphor Bronze/Tin-plated
 Wafer: LCP,UL94V-0
 Mates with A1001 series Housing



Ordering Information & Dimensions:

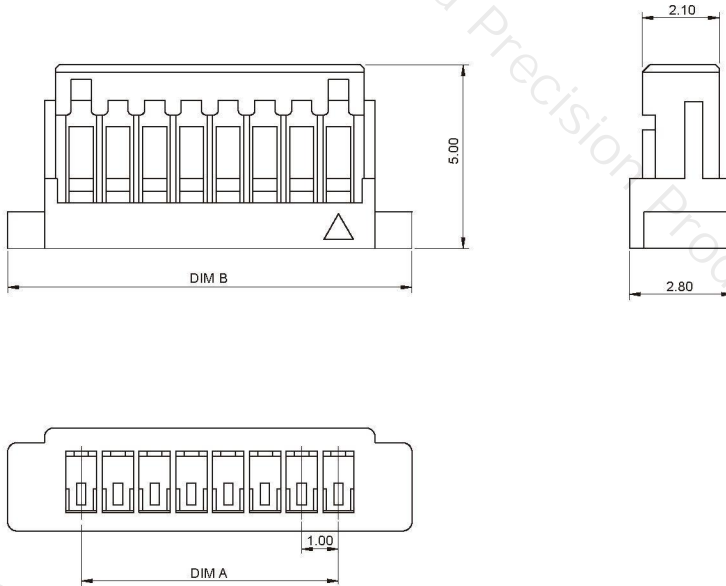
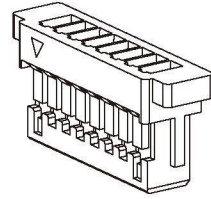
Circuit	Dimensions(mm)	
	A	B
02	1.00	4.00
03	2.00	5.00
04	3.00	6.00
05	4.00	7.00
06	5.00	8.00
07	6.00	9.00
08	7.00	10.00
09	8.00	11.00
10	9.00	12.00
11	10.00	13.00
12	11.00	14.00
13	12.00	15.00
14	13.00	16.00
15	14.00	17.00
16	15.00	18.00
20	19.00	22.00

A1001 SERIES

1.00mm pitch wire to board connector

A1001Y (1.00mm pitch Housing)

- Reference Information:
- Material: PA66,UL94V-0
- Suitable A1001 series terminal
- Mates with A1001 series Wafer

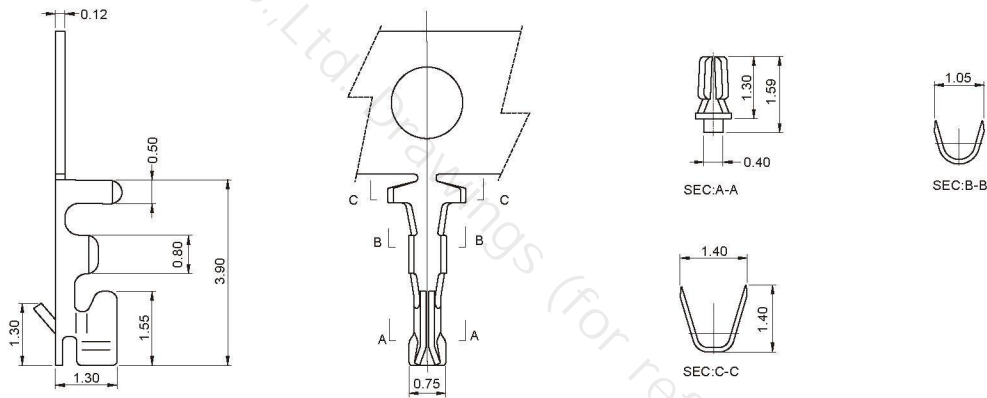


Ordering Information & Dimensions:

Circuit	Dimensions(mm)	
	A	B
02	1.00	5.00
03	2.00	6.00
04	3.00	7.00
05	4.00	8.00
06	5.00	9.00
07	6.00	10.00
08	7.00	11.00
09	8.00	12.00
10	9.00	13.00
11	10.00	14.00
12	11.00	15.00
13	12.00	16.00
14	13.00	17.00
15	14.00	18.00
16	15.00	19.00
20	19.00	23.00

A1001T (1.00mm pitch Terminal)

- Reference Information:
- Used in A1001 series Housing



Ordering Information & Dimensions:

Part No	Wire Range	Insulation O.D.	Material	Finish	Qty/Reel
A1001T	AWG #28 ~ #32	0.40~0.80mm	Phosphor bronze	Tin-plated	25000PCS

WIRE TO BOARD

BOARD TO BOARD

WIRE TO WIRE

FPC SERIES

THR SERIES

LIGHTING SERIES

OTHER SERIES