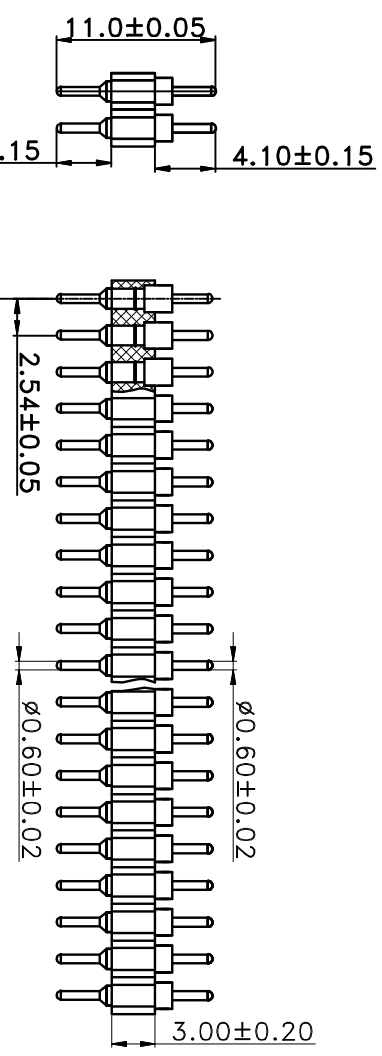
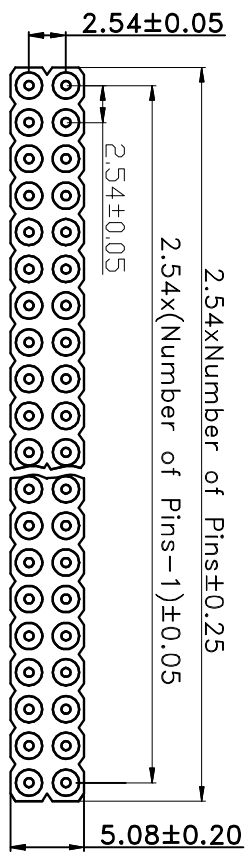


# HSE ROHS

REV	ECN NO	DESCRIPTION	DATE	NAME
A		NEW		



## Ordering Information

**L489XX - X X XX X**  
 NO. of Pins  
 Per Row: 01-40P  
 The connection method  
 0=180°  
 1=90°  
 2=SMT  
 Contact Plating  
 1=Gold flash  
 2=Au/Tin  
 Serial NO. 01-99  
 Packing  
 A=PE Bag  
 B=Tube  
 C=Tray  
 D=Reel

STANDARD TOLERANCE (EXCEPT SPECIFIED)	LINEAR	ANGLES
.0 ±0.30	0.°	±3°
.00 ±0.20	.0°	±2°
.000 ±0.10	.00°	±1°

<b>LDCONN 东莞连大精密制品有限公司</b> Dongguan Lianda Precision Products Co., LTD		TITLE DRAWN BY Lu Junhui		DATE 18.11.12	
PART NO L489X-0XXXX		CHECKED BY			
DRAWING NO		APPROVED BY			
SCALE	1:1	UNIT	mm	PAGE	1/1
SIZE					A4

**Materials**  
 Pin (outer sleeve): Brass, machined, CuZn38Pb2  
 Insulator body (back): Glass filled thermoplastic polyester UL94V-0

**Electrical**  
 Current rating: 3 Amps/contact max.  
 Contact resistance:  $\gamma$  4m /contact  
 Insulation resistance:  $\gamma$  1000M at V=100V  
 Operating voltage: 60 AC/DC

**Mechanical**  
 Operating temperature: Gold plated: -55 °C to +105 °C  
 (Continuous) -67° to +105°  
 Tin plated: -40 °C to +105 °C  
 Average insertion force with steel pin of 0.43mm/0.017" < 200g  
 Average withdrawal force with steel pin of 0.43mm/0.017" > 50g  
 Mechanical life: min. 200  
 Soldering temperature: 260 °C, 10s max